

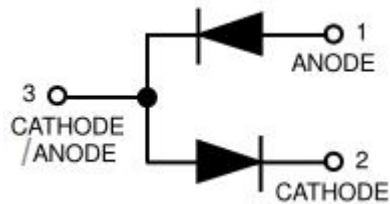
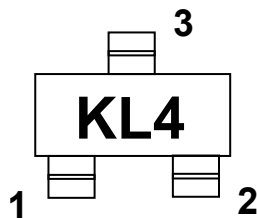


BAT54S SCHOTTKY DIODES

主要特征/Features

- ◇ Surface Mount SOT-23 Package ;
- ◇ Extremely Fast Switching Speed;
- ◇ RoHS compliant / Green EMC;

印字/MARKING 等效电路/Equivalent Circuit



极限参数/Absolute Maximum Ratings(TA=25°C unless otherwise noted)

参数/Parameter	符号/	数值/Value	单位/Unit
Peak Repetitive Peak reverse voltage	V_{RRM}		
Working Peak Reverse Voltage	V_{RWM}	30	V
DC Blocking Voltage	V_R		
Forward Continuous Current	I_{FM}	200	mA
Power Dissipation	P_D	0.2	W
Storage Temperature	Tstg	-55 ~ 150	°C

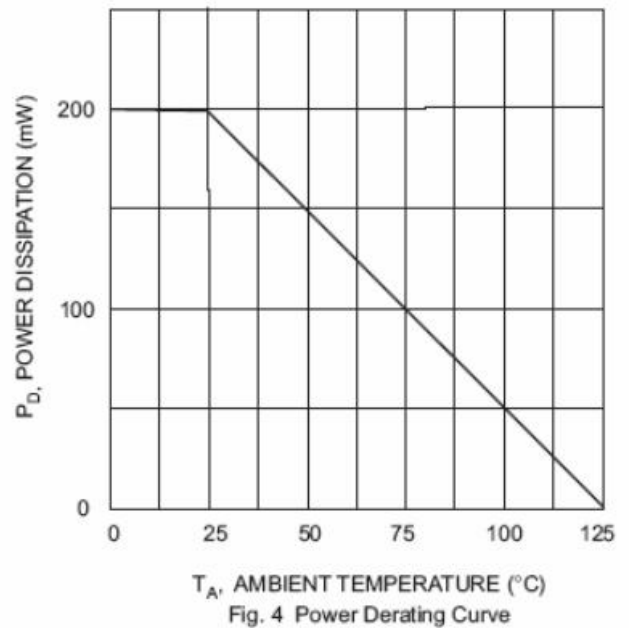
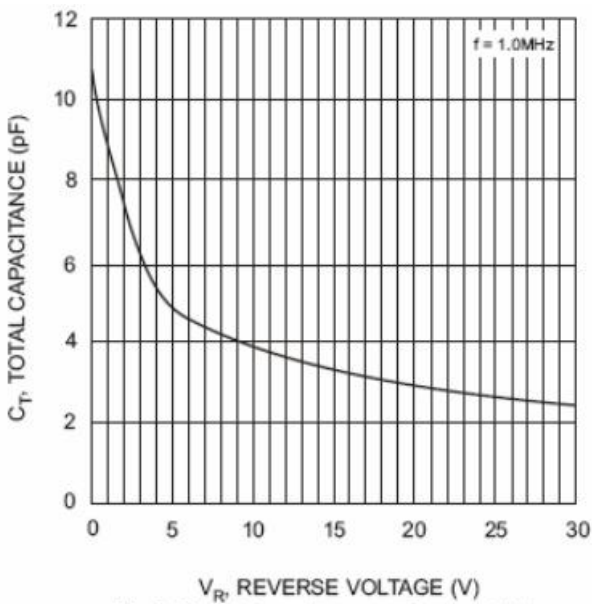
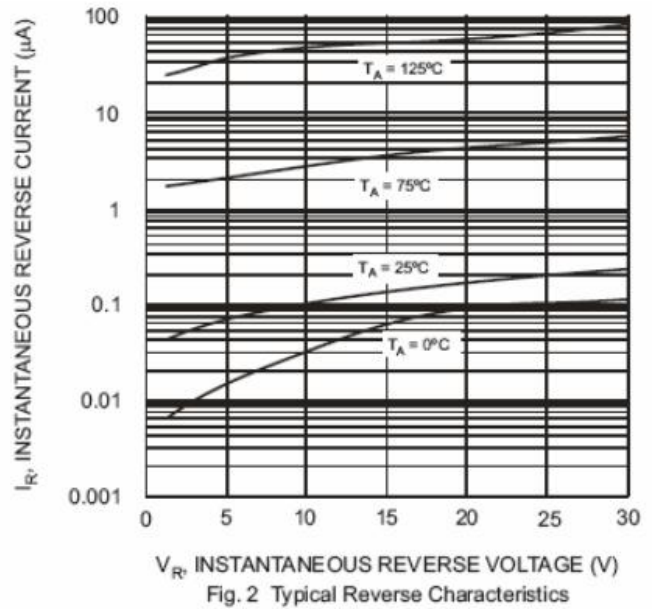
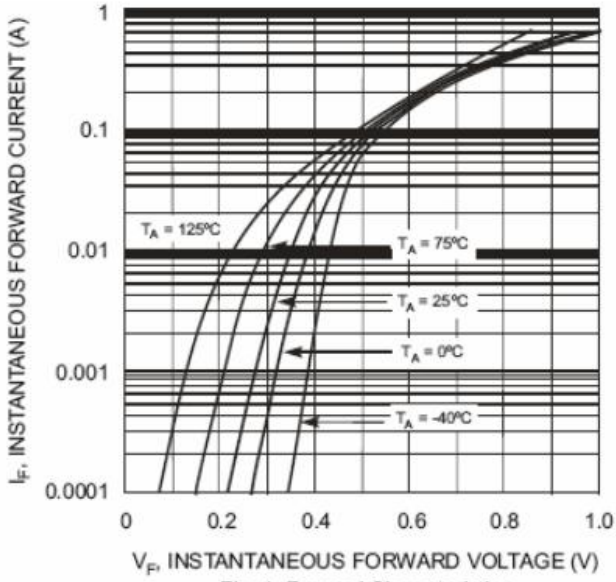


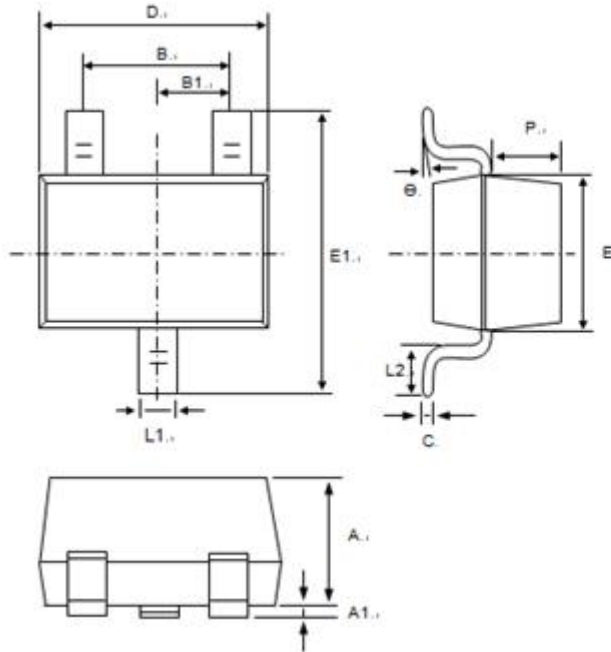
电性能参数/Electrical Characteristics (TA=25°C unless otherwise noted)

参数 Parameter	符号 Symbol	测试条件 Test conditions	最小值 Min	典型值 TYP	最大值 Max	单位 Unit
Reverse Breakdown Voltage	$V_{(BR)R}$	$I_R=100\mu A$	30			V
Forward voltage	V_{F1}	$I_F=0.1mA$			0.24	V
	V_{F2}	$I_F=1mA$			0.32	V
	V_{F3}	$I_F=10mA$			0.40	V
	V_{F4}	$I_F=530mA$			0.50	V
	V_{F5}	$I_F=100mA$			1	V
Reverse current	I_R	$V_R=25V$			2	μA
Diode Capacitance	C_D	$V_R=1V, f=1MHz$			10	pF
Reverse recovery time	t_{rr}	$I_F=I_R=10mA$ $I_{rr}=0.1 \times I_R$ $R_L=100\Omega$			5	nS



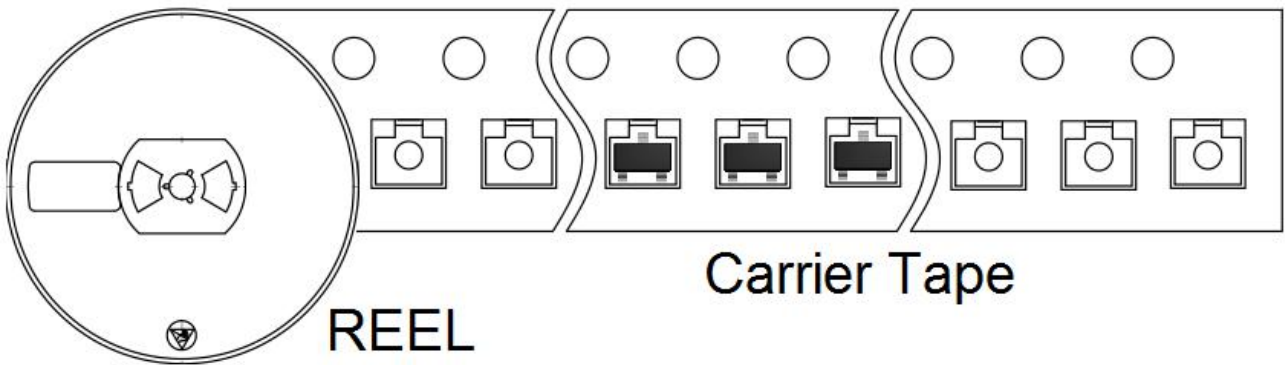
典型特性曲线图/Typical Characteristics





Symbol	Dim in mm		
	Min	Nor	Max
A	0.900	1.000	1.100
A1	0.000	0.050	0.100
L1	0.350	0.400	0.500
C	0.100	0.110	0.120
D	2.800	2.900	3.000
E	1.250	1.300	1.350
E1	2.250	2.400	2.550
B	1.800	1.900	2.000
B1	0.950TPY.		
L2	0.200	0.350	0.450
P	0.550	0.575	0.600

出货规范/Shipping Specifications



×15



×4



Reel	Reel Size	Box	Box Size(mm)	Carton	Carton size(mm)
3000 Pcs	7 inch	45 KPcs	185×185×188	180 KPcs	400×400×210