



型号：BAW56&BAV70&BAV99

SCHOTTKY DIODES

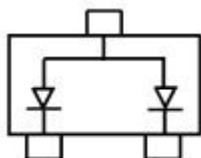
主要特性/Features

速度快 Speed Fast

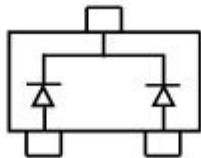
应用/Application

高速开关电路 High speed switch circuit

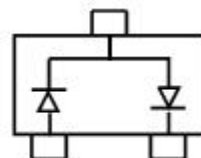
电路和印章/ Circuit&Marking



BAW56 Marking: A1



BAV70 Marking: A4



BAV99 Marking: A7

极限参数/Absolute Maximum Ratings(TA=25°C unless otherwise noted)

参数/Parameter	符号/ Symbol	数值/Value	单位/Unit
反向电压/Reverse Voltage	V_R	70	V
正向电流/Forward Current	I_F	200	mA
正向瞬间峰值电流/Peak Forward Surge Current	$I_{FM(surge)}$	500	mA
功率/ Power Dissipation	P_D	0.225	W
热阻/Thermal Resistance Junction to Ambient Air	$R_{\theta JA}$	556	°C/W
结温/Junction Temperature	T_j	150	°C
储存温度/Storage Temperature	T_{stg}	-55 ~ 150	°C



电性能参数/Electrical Characteristics (TA=25°C unless otherwise noted)

参数/Parameter	符号	测试条件	最小值	最大值	单位
反向击穿电压/Reverse Breakdown Voltage	V_R	$I_R=100\mu A$	70		V
正向电压/Forward Voltage	V_{F1}	$I_F=1mA$		0.715	V
	V_{F2}	$I_F=10mA$		0.855	V
	V_{F3}	$I_F=50mA$		1	μA
	V_{F4}	$I_F=150mA$		1.25	μA
反向漏电流/Reverse Current	I_R	$V_R=70V$		2.5	μA
端电容/Capacitance Between Terminals	C_T	$V_R=0, f=1MHz$		1.5	pF
反向恢复时间/Reverse Recovery Time	t_{rr}	$I_F=I_R=10mA,$ $I_{rr}=0.1 \times I_R,$ $R_L=100\Omega$		6	nS



典型特性曲线图/Typical Characteristics

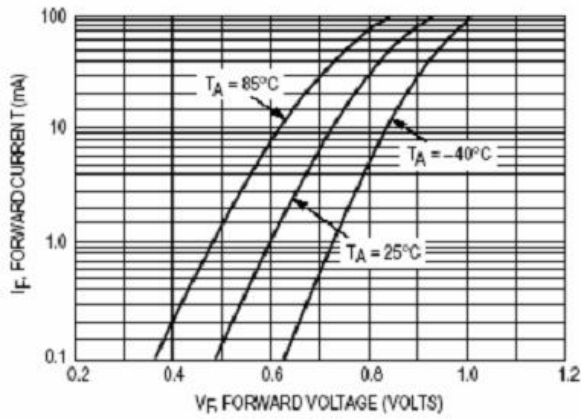


Figure 1 Forward Voltage

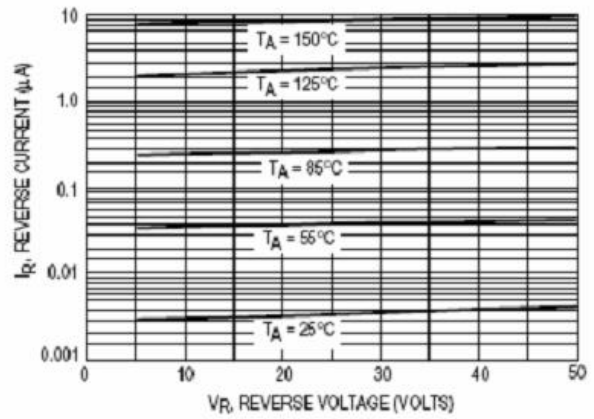


Figure 2 Leakage Current

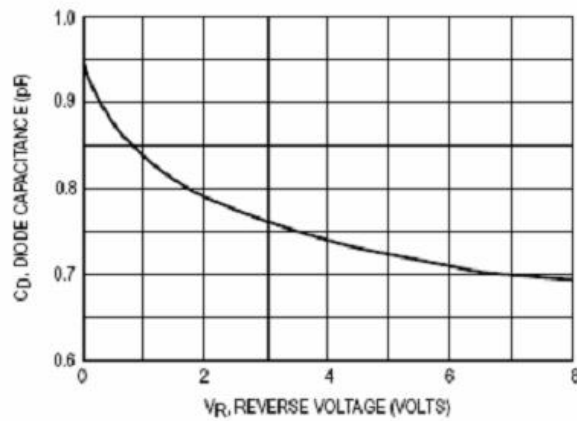
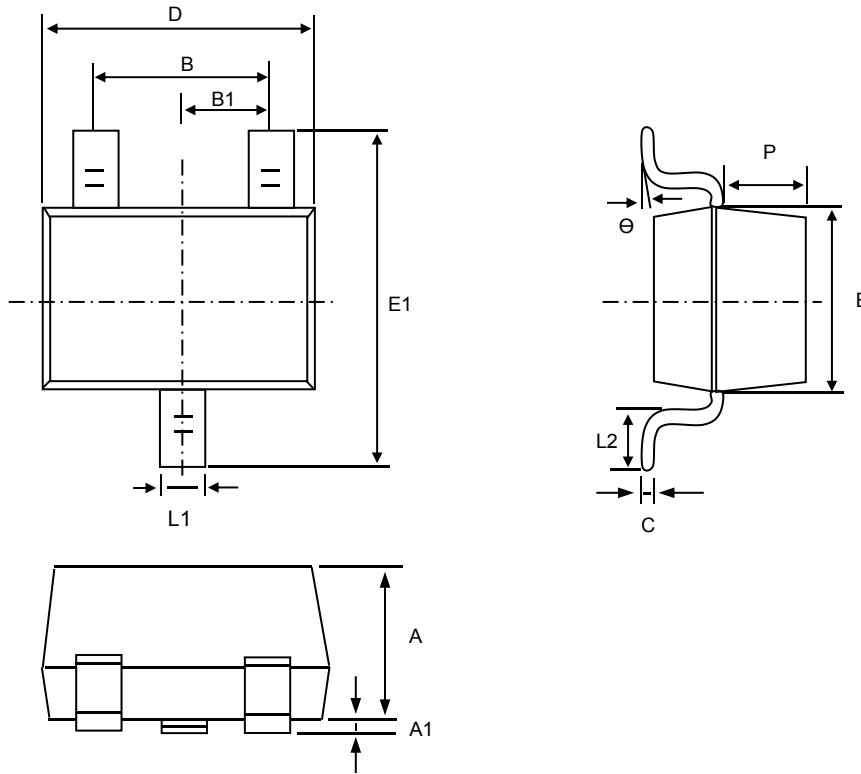


Figure 3 Capacitance



成品外观尺寸/SOT-23 Package Information



Symbol	Dim in mm		
	Min	Nor	Max
A	0.900	1.000	1.100
A1	0.000	0.050	0.100
L1	0.350	0.400	0.500
C	0.100	0.110	0.120
D	2.800	2.900	3.000
E	1.250	1.300	1.350
E1	2.250	2.400	2.550
B	1.800	1.900	2.000
B1	0.950TPY.		
L2	0.200	0.350	0.450
P	0.550	0.575	0.600