



型号：MMBD4148A/CA/CC/SE

SCHOTTKY DIODES

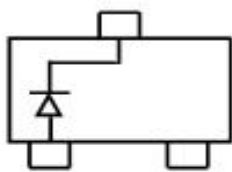
主要特性/Features

速度快,反向阻抗高 High speed, high reverse impedance

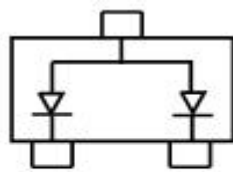
应用/Application

高速开关电路 High speed switch circuit

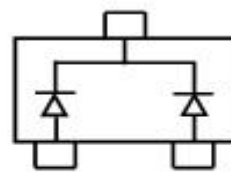
电路和印章/ Circuit&Marking



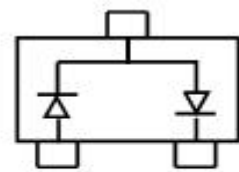
MMBD4148A
MARKING: 5H



MMBD4148CA
MARKING: D6



MMBD4148CC
MARKING: D5



MMBD4148SE
MARKING: D4



极限参数/Absolute Maximum Ratings(TA=25°C unless otherwise noted)

参数/Parameter	符号/ Symbol	数值/Value	单位 /Unit
反向直流电压/DC Reverse Voltage	V_R	100	V
反向重复峰值电压/Peak Repetitive Reverse Voltage	V_{RRM}	100	V
正向连续电流/Forward Continuous Current	I_{FM}	300	mA
平均整流输出电流/Average Rectified Output Current	I_O	200	mA
正向瞬间峰值电流 @=1 μ S Peak Forward Surge Current @=1.0S	$I_{FM(surge)}$	2.0 1.0	A
功率/ Power Dissipation	P_D	0.35	W
热阻/Thermal Resistance Junction to Ambient Air	$R_{\theta JA}$	357	°C/W
结温/Junction Temperature	T_j	150	°C
储存温度/Storage Temperature	T_{stg}	-55 ~ 150	°C

电性能参数/Electrical Characteristics (TA=25°C unless otherwise noted)

参数/Parameter	符号	测试条件	最小值	最大值	单位
反向击穿电压 Reverse Breakdown Voltage	$V_{BR(R1)}$	$I_R=100\mu A$	100		V
	$V_{BR(R2)}$	$I_R=5\mu A$	75		V
正向电压/Forward Voltage	V_{F1}	$I_F=10mA$		1	V
反向漏电流/Reverse Current	I_{R1}	$V_R=75V$		5	μA
	I_{R2}	$V_R=25V$		25	nA
端电容 Capacitance Between Terminals	C_T	$V_R=0, f=1MHz$		4	pF
反向恢复时间 Reverse Recovery Time	t_{rr}	$I_F=I_R=10mA, V_R=6V,$ $I_{rr}=0.1 \times I_R, R_L=100\Omega$		4	nS



典型特性曲线图/Typical Characteristics

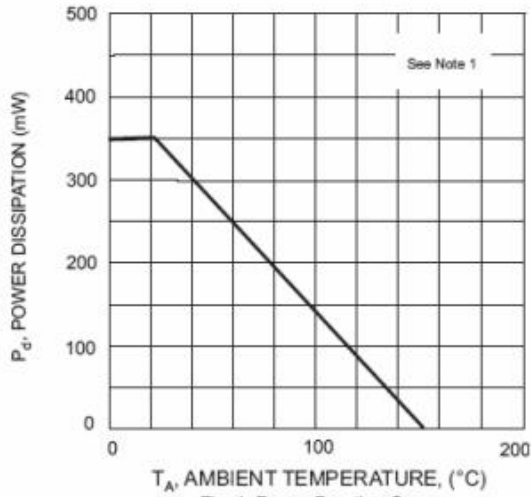


Fig. 1 Power Derating Curve

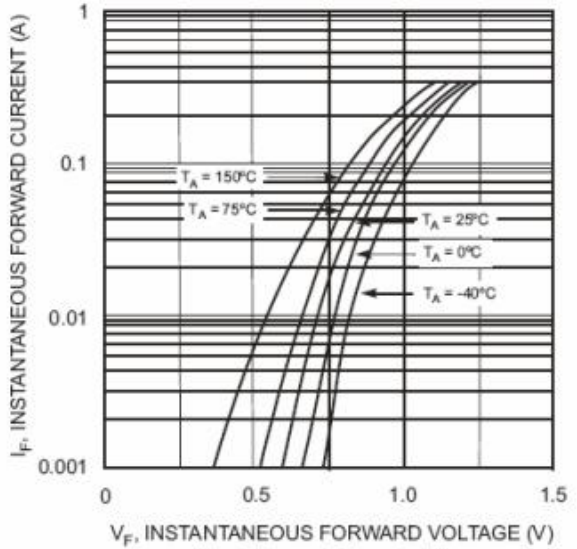


Fig. 2 Forward Characteristics

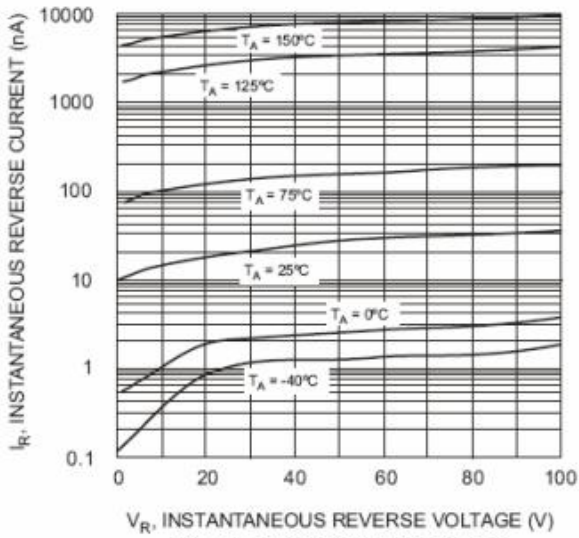


Fig. 3 Typical Reverse Characteristics

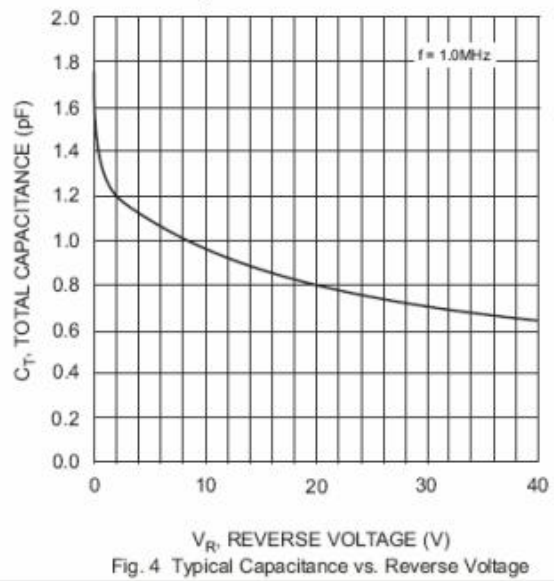
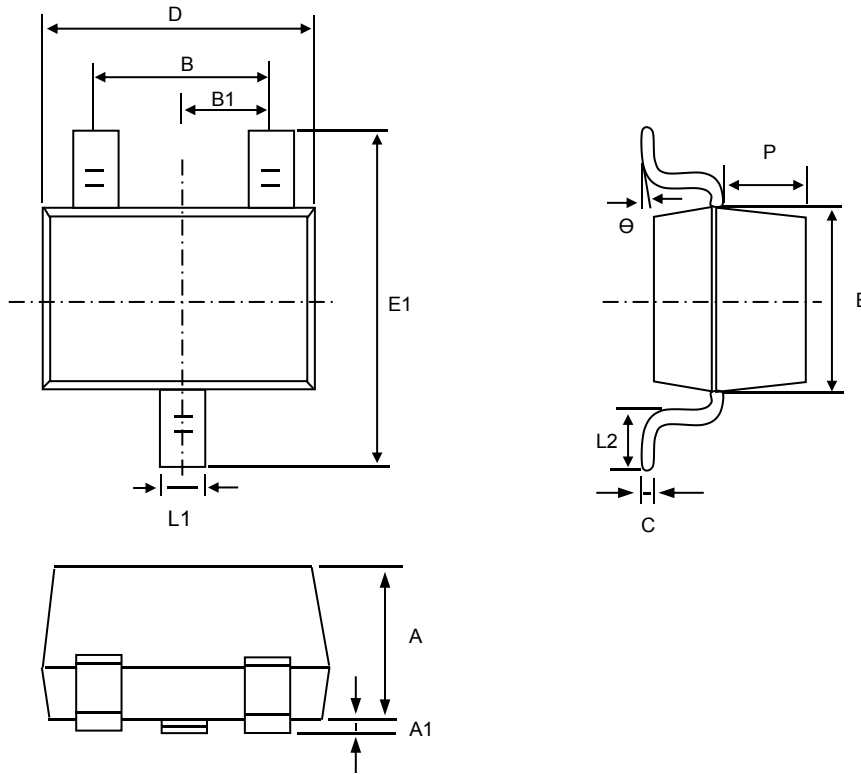


Fig. 4 Typical Capacitance vs. Reverse Voltage



成品外观尺寸/SOT-23 Package Information



Symbol	Dim in mm		
	Min	Nor	Max
A	0.900	1.000	1.100
A1	0.000	0.050	0.100
L1	0.350	0.400	0.500
C	0.100	0.110	0.120
D	2.800	2.900	3.000
E	1.250	1.300	1.350
E1	2.250	2.400	2.550
B	1.800	1.900	2.000
B1	0.950TPY.		
L2	0.200	0.350	0.450
P	0.550	0.575	0.600